



The ALNWR is a light and rugged pushbutton designed for remote control applications of machines and equipment equipped with the radio receiver RDC EVO.

The device has an emergency button for safety functions and 16 keys keypad with a backlight and integrated spotlight led. Up to 3 side buttons can be installed for custom applications, e.g., for duplicates the functionality of each button or DMS function. The keyboard graphic can be customized to best fit the machine application.

The hamming security code and the packet communication protocol allow for a reliable radio connection and continuous work without any interruptions caused by radio interference on the 434 or 868 MHz band.

## TECHNICAL FEATURES

MASTER CODE	ALNWR
POWER SUPPLY	3.7V 2000 mAh Li-ion INTEGRATED BATTERY
BUTTONS	<b>New</b> N. 16 FRONTAL KEYS (WITH HIGH POWER INTEGRATED BACKLIGHT AND SPOTLIGHT) <b>New</b> UP TO 2 LEFT SIDE BUTTONS (OPTIONAL) UP TO 1 RIGHT SIDE BUTTON (OPTIONAL) N. 1 EMERGENCY STOP BUTTON
LED	N. 16 PROGRAMMABLE SPOTLIGHT LEDS (PUSHBUTTONS INTEGRATED) <b>New</b> N.3 STATUS LED (GREEN & RED BICOLOR) <b>New</b> BATTERY STATUS LED (100-70% - 69-30% - <29%) <b>New</b> CHARGING LED (Red: in charge – green: charging complete)
RADIO FEATURES	BAND: 868 MHz (869.700-870.00 MHz) / 434 MHz (433.050-434.790 MHz) CHANNELS: 12 ( AUTOMATIC FREQUENCY SCAN) MODULATION: 2-GFSK ANTENNA: INTEGRATED
RADIO PROTOCOL	PACKET TRANSMISSION PROTOCOL BIDIRECTIONAL LINK HAMMING DISTANCE = 4 SAFETY STOP INTERVENTION TIME < 0,5s
AUTONOMY	UP TO 24 HOURS IN CONTINUOUS TRANSMISSION
RECHARGE	<b>New</b> 7 HOURS (MAX)
CONNECTIONS	INTEGRATED BATTERY CHARGER CONNECTOR (9÷36 VDC FROM EXTERNAL POWER SOURCE @ 0+40°C) <b>New</b> OPTIONAL: USB TYPE C – FOR BATTERY CHARGING (FAST CHARGE)
WORKING TEMPERATURE	-20°C +60°C



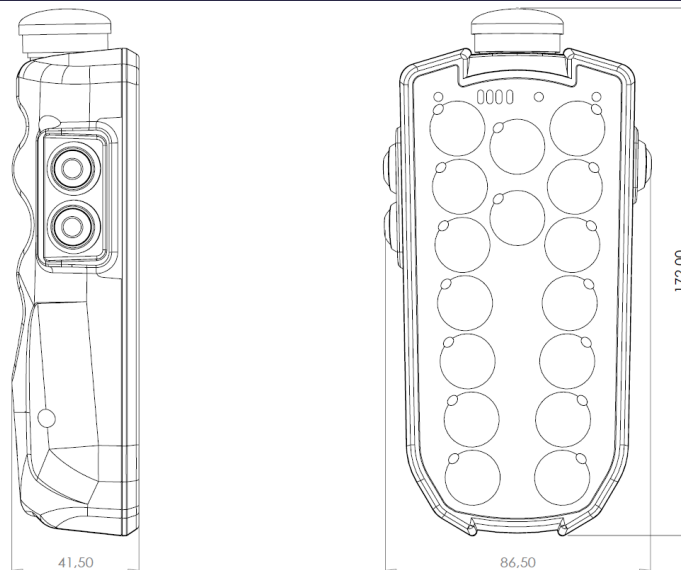


## STANDARDS

<b>ELECTROMAGNETIC (EMC)</b>	ACCORDING TO DIRECTIVE 2014/30/EU: EN 61000-6-4 EN 61000-6-2 EN 50498
<b>INFORMATION TECHNOLOGY EQUIPMENT – SAFETY</b>	EN 60950-1
<b>RADIO SPECTRUM MATTERS (RED)</b>	ACCORDING TO DIRECTIVE 2014/53/EU: ETSI EN 300.220-1 ETSI EN 300.220-2 ETSI EN 301.489-1 ETSI EN 301.489-3
<b>EMEGENCY STOP BUTTON (manufacturer's specification)</b>	EN60947-5-1 EN60947-5-5

ACCORDING WITH THE EN50498 THE DEVICE MEETS THE TECHNICAL SPECIFIC REQUIREMENTS OF 2004-104 DIRECTIVE (AUTOMOTIVE).

## SIZE (mm)



## STATUS BAR

Device battery charge is available by the 3 color LED display located in the front area.



**BICOLOR STATUS LED**  
Custom application use

**SPOTLIGHT LED**  
Integrated on each key

**BACKLIGHT**  
Integrated on each key



The status of the battery in charge is indicated by the dedicated bicolor led

**PUSHBUTTON STATUS LED**  
Radio communication status, diagnose and emergency stop button feedback

**BICOLOR STATUS LED**  
Custom application use

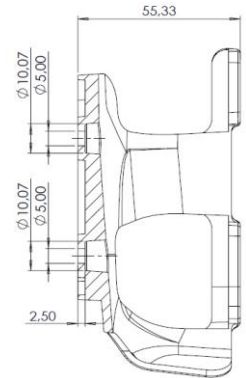
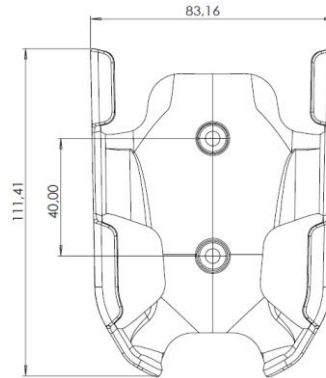
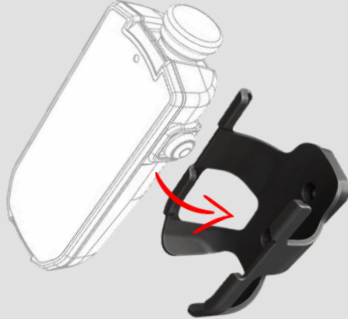
**CUSTOMIZABLE GRAPHIC**  
Pictograms, colors and company logo





FEATURES

MOUNTING BRACKET



CUSTOMIZABLE KEYBOARD GRAPHIC



OPTIONAL

INTEGRATED MAGNETIC BRACKET



FAUX LEATHER CASE

With rear spring clips for belt attachment and lid with Velcro closure for quick withdrawal.



BATTERY CHARGER with spiral cable included  
For lighter socket (12/24 VDC)

OPTIONAL:

- 220/230 VAC plug adapter
- **New** USB TYPE C (5 VDC)

Lighter  
Socket charger  
included



OPTIONAL:  
USB TYPE-C  
connector



RADIO KIT READY TO USE

See the dedicated datasheet on [almec.net](http://almec.net)

ALNWR  
RADIO TRANSMITTER



RDC EVO  
RADIO RECEIVER

