

Empowering  
**efficiency**

through

**IoT Connectivity**

with





# ALMECdiag Device: IoT Gateway for fleet management

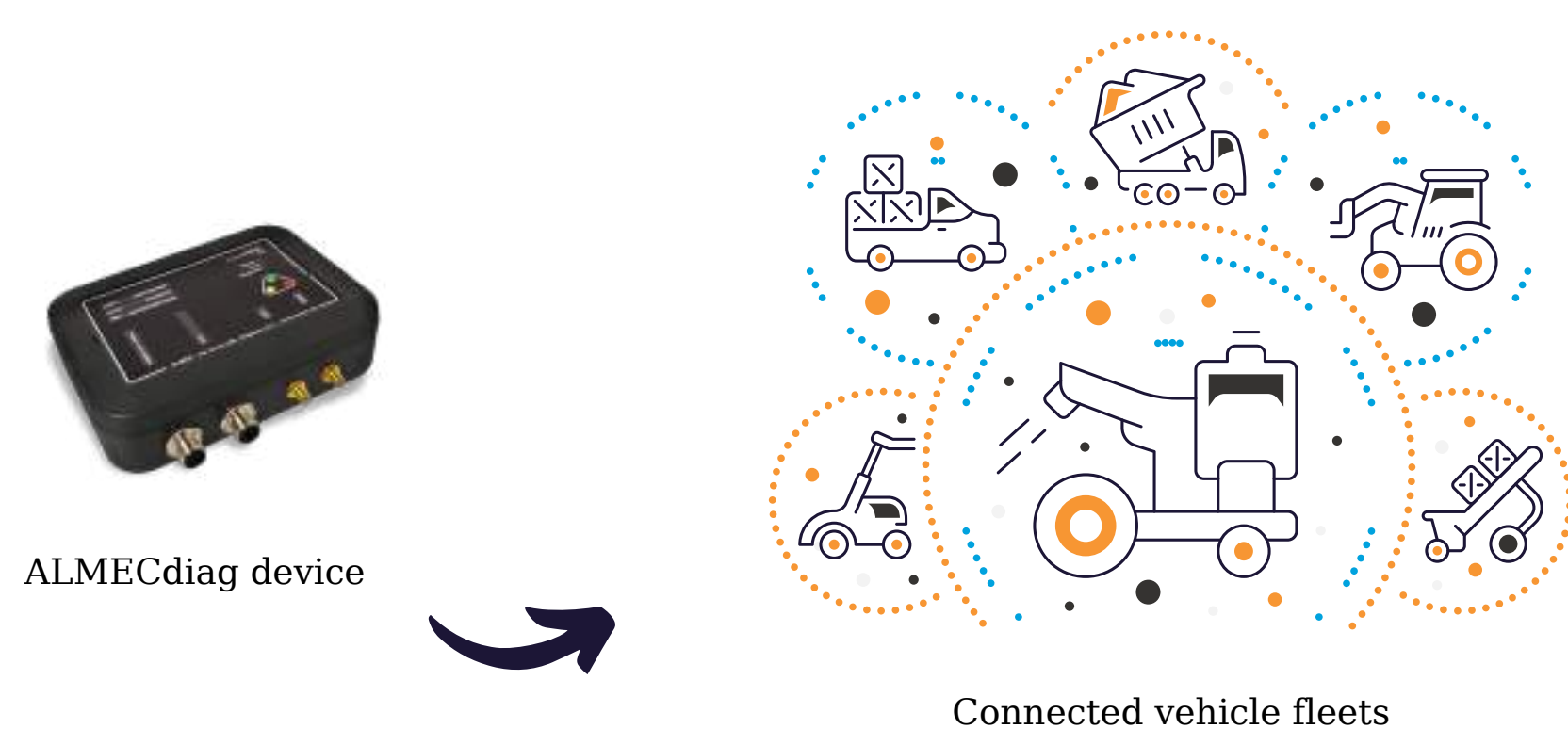
The **ALMECdiag device** enables **real-time monitoring** and diagnostics of vehicles within a fleet.

Installed on mobile machines, this device **collects data** from the electronic system of the fleet and transmitted it to the platform where are generated, for example, enabled users, location of vehicles, usage analytics, hours of work, or other **customized specific activities**.

The ALMECdiag system complements the device by providing a comprehensive **cloud-based fleet management platform (ALMECdiag Platform)**. The intelligent system utilizes advanced algorithms and data analytics to process the incoming data from the ALMECdiag devices in real-time.



ALMECdiag dashboard: cloud-based platform for fleet management



Fleet managers can access the system through a **user-friendly interface**, gaining valuable insights into the performance and health of their entire fleet.

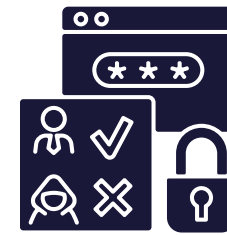
# ALMECdiag System: competitive advantage



One of the key features of the ALMECdiag system is its ability to support machine manufacturers in supplying their clients with **proactive maintenance and diagnostics**. By continuously monitoring the data from the ALMECdiag devices, the system can **identify potential issues and anomalies** in the vehicles' performance. This enables fleet managers to take prompt action, scheduling **corrective, preventive, and predictive maintenance** or repairs before a major breakdown occurs.



Moreover, the ALMECdiag system offers a range of additional functionalities. It provides comprehensive **reporting and analytics**, enabling fleet managers to gain deeper insights. The system can also generate **real-time alerts** and **notifications**, allowing fleet managers to respond swiftly to critical events, such as accidents or unauthorized vehicle use.



Access control to the vehicle



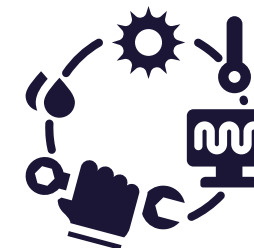
Usage statistics, forecasts & customized reports



Geofunctions and work areas management



Operational management & remote control



Corrective, preventive and predictive maintenance



Performance monitoring & real-time alerts

# ALMECdiag Device: Lead your business to maximized profit



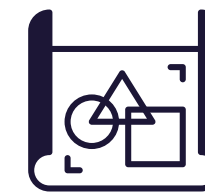
Data collection & analysis of connected vehicles & machinaries

Maximum profit through optimized production process

With the **real-time monitoring, proactive diagnostics, and cloud-based platform**, the ALMECdiag system enables fleet managers to **optimize performance, enhance safety, and reduce operational costs**. ALMECdiag is poised to transform the way fleet management is conducted, bringing efficiency and effectiveness to the management of vehicle fleets.



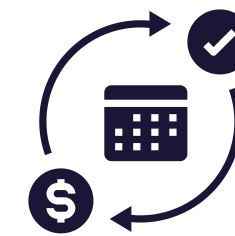
## Subscription-based system



Project development



Device & platform customization



Subscription to utilize the platform functions (1 / 3 / 5 years price solutions)



# ALMECdiag platform: dashboard







**ALMEC**  
MECHATRONICS

