



The ALNW is a pushbutton designed for control applications of machines and equipment equipped with a CAN BUS or SERIAL network.

The device has an emergency button with dry contacts and 16 keys keypad with a backlight and integrated spotlight led.

If required, up to 3 side buttons can be installed for custom applications e.g., for duplicates the functionality of each button. The keyboard graphic can be customized to best fit the machine application.

The spiral cable and the rugged connector allow it to stay away from the equipment, saving space



## TECHNICAL FEATURES

<b>MASTER CODE</b>		ALNW
<b>POWER SUPPLY</b>		9-36 VDC / CURRENT ABSORPTION 25mA AT 24VDC (STAND BY MODE)
<b>BUTTONS</b>	<b>TOTAL 20</b>	N. 16 FRONTAL KEYS (WITH INTEGRATED BACKLIGHT AND SPOTLIGHT) N. 2 LEFT SIDE BUTTONS (OPTIONAL) N. 1 RIGHT SIDE BUTTON (OPTIONAL) N. 1 EMERGENCY STOP BUTTON
<b>LED</b>	<b>TOTAL 17</b>	N. 16 PROGRAMMABLE SPOTLIGHT LEDES (PUSHBUTTONS INTEGRATED) N. 1 STATUS LED (GREEN & RED BICOLOR) OPTIONAL: ADDITIONAL N.2 BICOLOR LED
<b>CAN BUS</b>	<b>1 PORT</b>	2.0B COMPLIANT - (11, 29 BIT) - ISO 11898 - UP TO 1MBIT/S
<b>CAN BUS PROTOCOLS</b>		CAN OPEN (CIA DS401 DEVICE PROFILE FOR GENERIC I/O MODULE, WITH DS306 EDS FILE) ON REQUEST: SAE J1939
<b>SERIAL</b>	<b>1 PORT</b>	RS232 / RS422 / RS485
<b>CONNECTION</b>	<b>WIRED</b>	SPIRAL CABLE SEE PAGE 2 FOR OPTIONS
<b>WORKING TEMPERATURE</b>		-20°C +60°C
<b>PROTECTION</b>		IP64





## STANDARDS

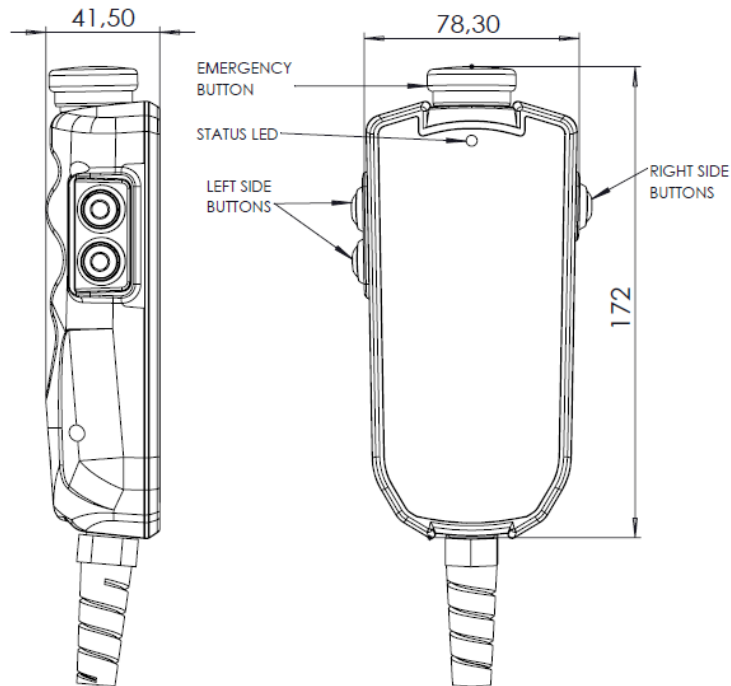
<b>ELECTROMAGNETIC (EMC)</b>	ACCORDING TO DIRECTIVE 2014/30/EU: EN 61000-6-4 EN 61000-6-2 EN 50498
<b>EMEGENCY STOP BUTTON</b>	EN60947-5-1 EN60947-5-5 (manufacturer's specification)

ACCORDING WITH THE EN50498 THE DEVICE MEETS THE TECHNICAL SPECIFIC REQUIREMENTS OF 2004-104 DIRECTIVE (AUTOMOTIVE).

## ELECTRONIC FEATURES

<b>SLAVE USAGE</b>	EDS FILE
<b>PROGRAMMING</b>	FIRMWARE UPLOAD BY CAN BUS WITH ALOADER SOFTWARE TOOL
<b>EMERGENCY STOP BUTTON</b>	35 VDC; 2 A

## SIZE (mm)



## ELECTRICAL CONNECTIONS AVAILABLE

SPIRAL CABLE L = 80 cm (EXTENDED L = 450 cm) - CUSTOMIZABLE LENGTH ON REQUEST

AMP SUPERSEAL 6 PIN CONNECTOR



UTG608P SOURIAU CONNECTOR



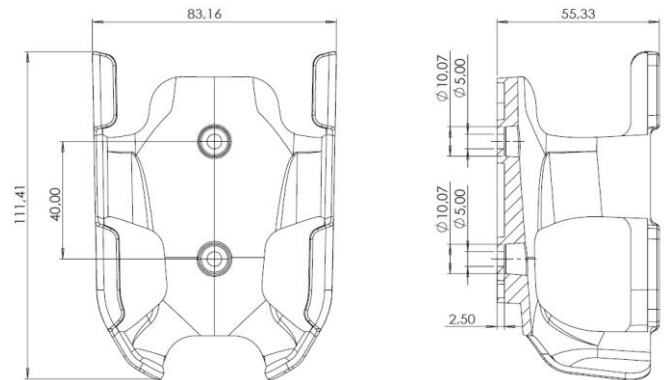
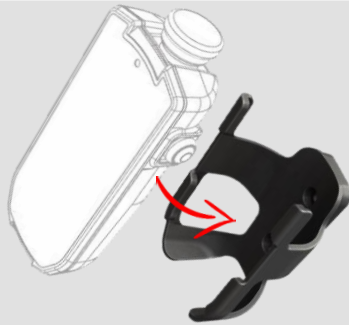


## CONNECTIONS PINOUT

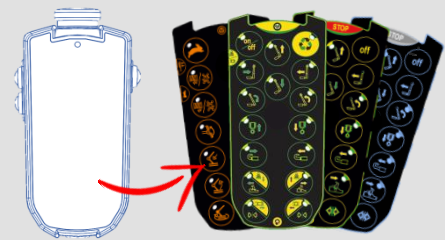
CAN VERSION CONNECTIONS			SERIAL VERSION CONNECTIONS		
PIN	COLOR	DESCRIPTION	PIN	COLOR	DESCRIPTION
1	BROWN	POSITIVE POWER SUPPLY	1	BLACK	POSITIVE POWER SUPPLY
2	ORANGE	CAN H	2	GREY	NEGATIVE POWER SUPPLY
3	WHITE	NEGATIVE POWER SUPPLY	3	YELLOW	A-LINE
4	YELLOW	CAN L	4	ORANGE	B-LINE
5	VIOLET	EMERGENCY BUTTON DRY CONTACT	5	BROWN	EMERGENCY BUTTON DRY CONTACT
6	TURQUOISE	EMERGENCY BUTTON DRY CONTACT	6	VIOLET	EMERGENCY BUTTON DRY CONTACT

## FEATURES

**MOUNTING BRACKET**  
included



**CUSTOMIZABLE KEYBOARD GRAPHIC**



## OPTIONAL

**INTEGRATED MAGNETIC BRACKET**





**ALMEC**  
MECHATRONICS

NOTE